

HopeWorks Services & Programs

- Emergency Shelter
- Advocacy Services
- Counseling Services
- Abuser Intervention Program (women & men)
- Legal Assistance and Advocacy
- Free Community Education Programs
- Volunteer Opportunities
- Youth Leadership Project

All of our services are based on a sliding fee scale, or are free.

No one is turned away because of an inability to pay.

Our services are confidential and are provided without regard to age, disability, ethnicity, gender identity, race, religion, or sexual orientation.

HopeWorks of Howard County

Our mission is to support and advocate for people in Howard County affected by sexual and intimate partner violence and to engage the community in creating the change required for violence prevention.

At HopeWorks we are guided by a vision that sees a community in which everyone is free to live a self-determined life without the threat of these serious aggressions.

We serve the community without bias to gender, age, race, ethnicity, religion, disability or sexual orientation.

If you or someone you know needs immediate shelter or is experiencing a crisis, call our 24-Hour Helpline

24-Hour Helpline

(410) 997-2272

If you or someone you know is NOT in immediate danger, call the HopeWorks main office at (410) 997-0304 for more information or to schedule an appointment.



Founded in 1978, HopeWorks of Howard County is a private nonprofit agency.

Sexual Assault Recovery Services

 *respect, compassion, support*

24-Hour Helpline

Emergency Shelter

Advocacy

Legal Services



HopeWorks of Howard County Inc.
9770 Patuxent Woods Drive, Suite 300
Columbia, MD 21046

hopeworksofhc.org

24-Hour Helpline: (410) 997-2272

What is Sexual Assault?

Sexual assault is defined as any sexual activity involving a person who does not or cannot consent. It may be perpetrated by someone you know (an acquaintance, family member, a date, partner), or strangers.

Sexual assault is a form of violence that affects people of all ages, backgrounds, ethnicities, genders, and sexual orientations.

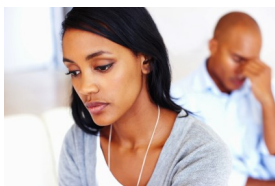
Examples of sexual assault include:

- Rape or attempted rape
- Unwanted touching or groping
- Incest
- Sex Trafficking
- Sexual coercion
- Molestation
- Child Sexual Abuse
- Non-contact sexual abuse

What is non-contact sexual abuse?

Not all types of sexual violence include physical contact between the victim and the perpetrator (person who harms someone else).

Non-contact sexual abuse violates a person's trust and safety. It includes threats, sexual harassment, peeping, and voyeurism.



You are not alone

If you have experienced any form of sexual violence please know you are not alone.

HopeWorks offers confidential services that can empower and support you.



HopeWorks is the Rape Crisis Center for Howard County

HopeWorks, founded in 1978, is a private nonprofit agency that provides services to women and men impacted by sexual assault and to all individuals, including children impacted by domestic violence.

The safety of our clients is our primary concern.

The agency works to rebuild lives and eliminate sexual assault and intimate partner violence in Howard County. We facilitate hope and safety in our community by providing telephone helplines, counseling, residential and legal assistance, and free community education programs.

Call us at (410) 997-0304 for more information or to schedule an appointment.

Recovery Services

24–Hour Helpline

If you have questions about what you have experienced, need to talk, or wonder what kind of resources are available to you, our helpline offers assistance and referral services—anytime—day or night.
24-Hour Helpline (410) 997-2272

Hospital Advocacy

Our trained advocates respond to calls from Howard County General Hospital and arrive promptly to provide comfort and support through the forensic exam
24-hours a day, seven days a week.

Legal Services

HopeWorks staff attorneys represent survivors of sexual assault in protective order and peace order hearings in both the District and Circuit Courts of Maryland for Howard County. Legal staff and volunteers also provide criminal accompaniments to survivors of sexual violence and provide assistance in accessing crime victims' compensation funds.

It is never too late to begin the process of healing...

Counseling

No matter when the assault occurred, it's never too late to begin the process of healing. Our Clinical Department offers individual crisis counseling sessions and ongoing counseling sessions, as well as therapeutic support groups.